

All students are reviewed by the Admissions and Review Panel (ARP) of the English Schools Foundation. The ARP receives, evaluates and makes placement recommendations regarding applications for entry to learning support classes and the Jockey Club Sarah Roe School.



Jockey Club Sarah Roe School
賽馬會善樂學校



Two of the JCSRS Therapy Rooms



If you would like to visit the school, then please do not hesitate to contact us.



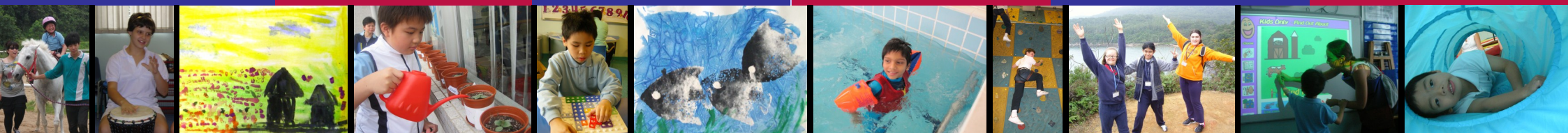
Jockey Club Sarah Roe School
賽馬會善樂學校

2B Tin Kwong Road
Homantin
Hong Kong

九龍何文田天光道2B號
Telephone: +852 2761 9893
Fax: +852 2381 4081
Email: info@jcsrs.esf.edu.hk



Empowering Young People to
Achieve Their Full Potential



The Jockey Club Sarah Roe School (JCSRS) values the individuality of each student. We aim to provide a specialised and differentiated education within a nurturing and supportive environment.



A student doing hydrotherapy with the Physiotherapist

JCSRS is a purpose built international special school which provides a quality, inclusive education for pupils with profound and multiple learning difficulties. JCSRS is one of twenty one schools in Hong Kong which together form the English Schools Foundation (ESF). The school has 60 places catering for students ranging in age from 5 to 19 years. We have small class sizes with a ratio of one teacher for every eight students. Each teacher is supported by a minimum of 2 educational assistants.

JCSRS has a multi disciplinary staff consisting of highly qualified and experienced Teachers, Speech and Language Therapists, Occupational Therapists, a Physiotherapist and a Nurse.

The school has a range of excellent facilities including a hydrotherapy pool, specially designed changing and toileting areas, a light and sound room, sensory motor room, medical and therapy rooms. We have a strong focus on inclusive technology for our students. Students make regular use of the school library and computers.

The school is situated in a pleasant area of Kowloon and shares a campus with a secondary school. It is also adjacent to an ESF primary school, which provides opportunities for integration. The catchment area for the school is the whole of Hong Kong. The school PTA operates a bus service which covers much of Hong Kong.



Students reading together



The School Library

The school curriculum for both primary and secondary students aims to develop independence and life skills for each student.

In addition to the classroom curriculum, students have the opportunity to participate in a variety of other activities. The school has specialised PE and music teachers. Each class has a monthly educational visit.



Secondary students learning rugby skills

